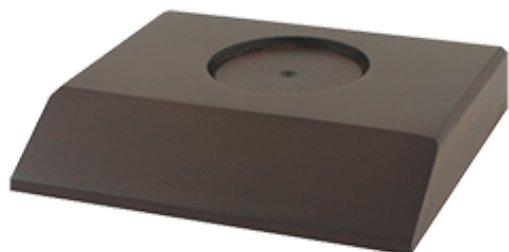


CK-378BS - Base For Marble Apple

**Features:**

Indented wood base. (Apple sold separately - see CK-378, 99-378GL or 99-378X). Metal plate and Imprint is included in the price of the base.

Colors:

Wood grain base as pictured.

Production:

Normal production - 8 working days. For rush service - (click for details).

Packaging:

Packaged in presentation gift box.

Size/Weight:

4" W x 3-1/2" L x 3/4" H 1 lbs. per thousand

Options:

Apple Clock, CK-378, sold separately.

Item / Quantity	12	25	50	100	250
CK-378BS	9.500	8.500	8.000	7.500	7.200

5C

Imprint:

Method: Pad Print / Silk-Screen. For Laser Engraving call for a quote.

Colors: 30 stock colors to choose from. PMS Color Match: \$25.00(v).

Size: imprint on PLATE: 2-1/2" W X 1/2" H

Multi-color: Multi color imprint available. Add a running charge of \$.60(V) each per color, per position.

Set-up Charges(v):

Artwork: No art charge if digital camera-ready artwork (email, disk or upload) is supplied. Art preparation charges apply if digital camera-ready artwork is not supplied, (see general information for details).

Plates: Set-up is \$40.00(v) per color, per location. Pricing shown includes printing any one stock color, one location. For each additional stock color, add a running charge of \$0.60(v) per piece. Reorder set-up \$25.00(v) Per color per position. Less than minimum charge \$50.00(v).

Proofs: Color email proofs are provided at no charge. Pre-production product samples are \$40.00(V) per color plus cost of item and applicable set up charges. Allow 3-5 working days. Upon approval of product samples, no other set-up charges will apply.

Items Per Box	Box Weight	Box Size
12	3lbs	10" x 6" x 6"
25	6lbs	10" x 10" x 8"
50	11lbs	10" x 10" x 8"
100	19lbs	23" x 8" x 10"